

RESOLUTION NO. 990729-30

WHEREAS, on November 3, 1998, Austin residents approved Propositions 11 and 12, authorizing the City to build a Community Events Center including parkland development and the construction of parking facilities, incidental concessions, and related infrastructure, and authorizing the lease of Palmer Auditorium for the purpose of renovating it as a Performing Arts Center, all of which will be located within the Waterfront Overlay Auditorium Shores zoning subdistrict; and

WHEREAS, City staff has worked with stake holders and interested citizens in an open process to create a conceptual plan for the location and footprint of buildings on the site, and for the other contemplated development and construction; and

WHEREAS, the development of the conceptual plan is consistent with the recommendations of the Town Lake Park Comprehensive Plan; and

WHEREAS, the City has committed to bring the new Community Events Center and Performing Arts Center on line by July 2001, and the City Council desires to expedite the development of this project; **NOW, THEREFORE,**

BE IT RESOLVED BY THE CITY COUNCIL OF THE CITY OF AUSTIN:

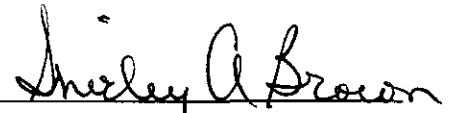
- (1) The conceptual plan attached hereto as Exhibit A is approved for the development of Town Lake Park and the Community Events Center, including parkland development and the construction of parking

facilities, incidental concessions, and related infrastructure, and for the renovation of Palmer Auditorium pursuant to a lease, to be utilized as a Performing Arts Center, all within the Auditorium Shores zoning subdistrict; and

- (2) The City Manager is directed to initiate amendments to the City Code necessary to allow the development of those projects as set out on the conceptual plan.

ADOPTED: July 29, 1999

ATTEST:



Shirley A. Brown
City Clerk

bjl

Austin Town Lake Park MASTER PLAN

July 1999

EDAW

in association with:

Jose Martinez Associates • Winterowd Associates • TBG Partners



City of Austin

Town Lake Park Master Plan

Master Plan

Legend

July 22, 1999

EDAW, Inc.

10000 N. Mopac Expressway, Suite 1000 Austin, TX 78753

Jose Mariluz & Associates
Winterrowd Associates
TBC Partners



VISION FOR TOWN LAKE PARK

CREATE A CULTURAL PARK THAT IS THE JEWEL OF THE AUSTIN PARK AND OPEN SPACE SYSTEM, THE CENTER OF TOWN LAKE, A CITY "WIDE" FOCUS FOR CULTURAL EVENTS, AND A MAJOR URBAN OPEN SPACE THAT IS CLOSE TO AND CONNECTED WITH THE SURROUNDING NEIGHBORHOODS AND DOWNTOWN.

A park where culture can flourish

- Renovate Long Auditorium to create a center for performing arts in Austin.
- Maintain and enhance Auditorium Shores as a location for festivals, concerts and special events.
- Build a Community Events Center that hosts a variety of Austin-based events and activities.
- Enhance the Dougherty Arts Center program and facilities, and provide outdoor areas near the Center for educational activities and art displays.
- Develop and organize an entity to coordinate schedules, activities, programs, security and maintenance at Town Lake Park to ensure a well-functioning urban park.
- Include educational and interpretive components in the park to serve school children and residents.
- The components could include pavement art, interpretive markers and plaques, structures, exhibits, and programs.
- Develop a program to encourage involvement by local and regional artists/artisans in the design of public art, site furnishings and exhibits in the park.
- Develop the park to include public art opportunities such as sculpture, earthworks, fountains, memorials, and interactive play areas.
- Provide additional services (such as restrooms and cafes) in the cultural buildings and in the park to meet the needs of the event attendees.

An important place for Austin

- Enhance and accentuate views of the downtown skyline and the Capitol Dome.
- Develop Town Lake Park as a major component of the Town Lake Park System.
- Eliminate Riverside Drive between 1st Street and the Railroad ROW to create a significant and contiguous open space in the heart of the city.
- Integrate the park with the surrounding neighborhoods and downtown by providing safe pedestrian and bicycle connections and gateways.
- Encourage mixed-use urban development adjacent to the park to reinforce the street edge, provide support to park users, and to create an active and attractive environment in and around the park.
- Create a distinct park design treatment along 1st Street and Barton Springs Road that enhance those corridors and encourages their development as key commercial streets.
- Create a distinct character and recognizable image that is of and unique to Austin, and that reinforces this park as a special place in Austin.
- Preserve the integrity and character of existing residential areas adjacent to the park.
- Enhance pedestrian connections to downtown to encourage lunch time and after work use of the park.
- Create a cultural trail in the park that celebrates and commemorates the unique history of Austin, its people, places, and events.

A park where all feel welcome

- Provide a variety of facilities for picnics, seating, story telling, informal gatherings, children's play, informal recreation, and other park activities.
- Provide a series of kiosks containing park concessions and park services throughout the park to help activate key areas, create an attractive environment and to meet the needs of the park users.
- Create a series of gateways to the park that reinforce the character of the park and invite the residents of adjacent neighborhoods and the City of Austin to enjoy Town Lake Park.
- Reinforce 1st Street and Barton Springs Drive as the front door to the park by enhancing the streetscape treatment along these corridors.
- Integrate the proposed pathways with the existing Town Lake trail network and with the surrounding neighborhood path system.
- Provide pedestrian crosswalks into the park and encourage pedestrian movement throughout the park.
- Improve access to the water's edge with paths, enhanced key view corridors, and seating areas near the water's edge.
- Provide an interactive water feature in the park to attract park users of all ages and to provide a cool place during the warm months.
- Provide the resources to ensure the park is properly maintained and operated throughout the year.
- Prepare a detailed maintenance manual as part of the design process that addresses irrigation, feeding, pruning, trash collection, and annual/periodic maintenance requirements.

An environmentally sensitive park

- Preserve as many mature trees as possible on the site.
- Use native plants and xeriscape that respond to and survive in the Austin environment, and require less water and maintenance.
- Provide greater areas of landscape planning to increase the amount of pervious surface and reduce runoff.
- Rediscover and restore Bouldin Creek as an urban waterway and use it to demonstrate ways to improve water quality, accommodate and reduce runoff, and showcase special riparian plants.
- Provide interpretive features in the park that tell the story of the natural environment of the site and/or region.
- Use non-native plants judiciously for shade, color and visual interest.
- Incorporate plant materials that introduce color, texture and seasonal change.
- Provide receptacles throughout the park for trash and recycling collection.
- Use recycled materials throughout construction of the park and in the design elements.

A secure and accessible park

- Ensure easy access into the park and cultural facilities with marked/signalized crosswalks, sidewalks, pathways, streets, and transit (Dillo, Capital Metro stops).
- Provide facilities that meet ADA requirements.
- Separate pedestrians, bicycles and vehicular ways where possible.
- Provide lighting at appropriate levels to create a safe and attractive environment throughout the park.
- Distribute small surface parking areas through the park and near park entrances.
- Provide 1,200 structured parking spaces on site for the cultural facilities and park.
- Enhance off-site parking areas with lighting, signage, and plantings to improve their image and encourage use.
- Develop a "park line" shuttle as part of the Dillo system to link the park and cultural facilities with off-site parking areas.



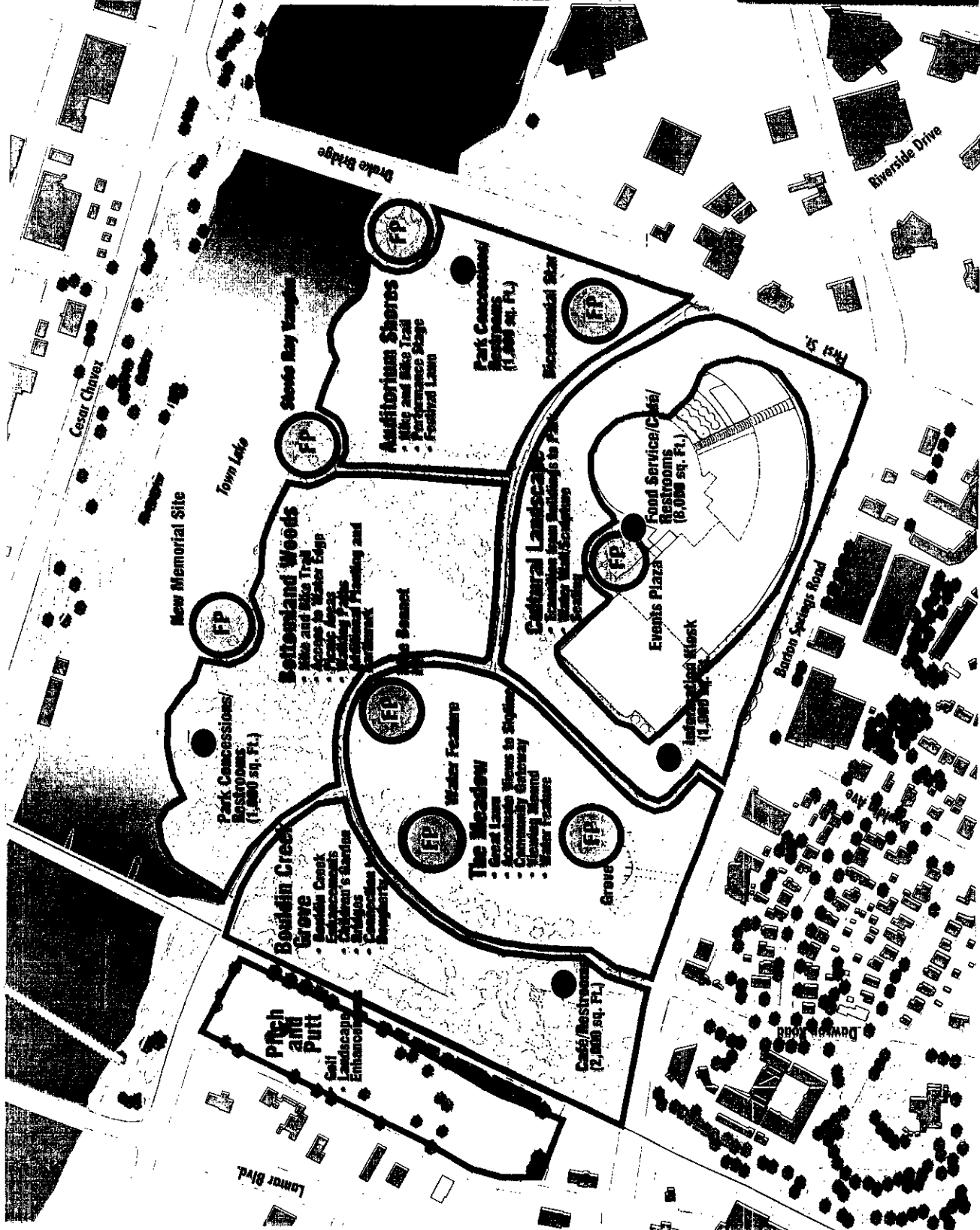
City of Austin

Town Lake Park Master Plan

Spaces and Focal Points

- Legend**
- Park Space
 - Focal Points
 - Concession Location (Map indicates various locations)

July 22, 1999



03-6-2016



City of Austin

Town Lake Park Master Plan

Circulation, Access and Parking

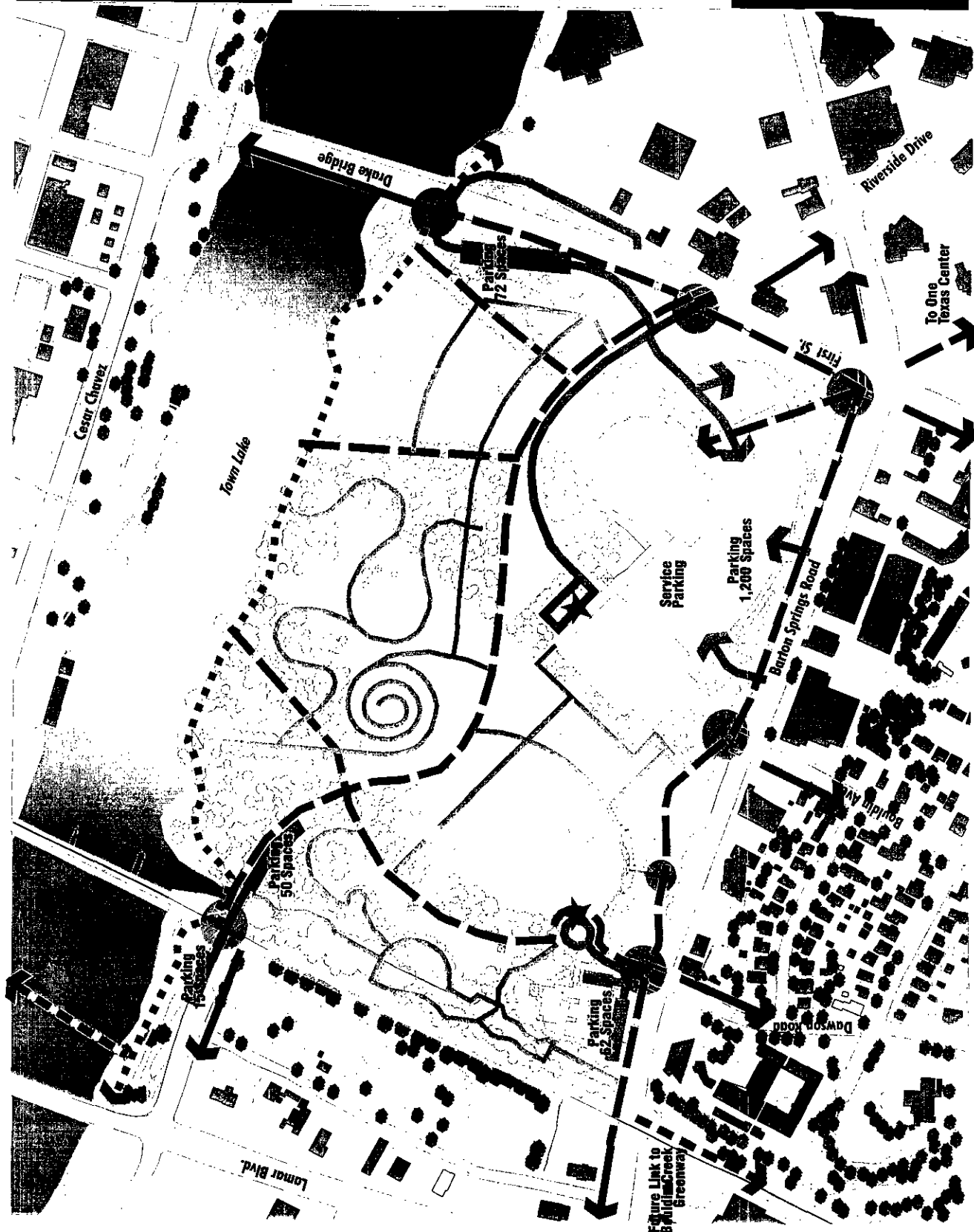
Legend

- Town Lake Hike and Bike Trail
- Primary Path (6' to 12' wide)
- Secondary Path (4' to 8' wide)
- Pedestrian Link to Adjacent Area
- Park Gateway
- Vehicular Access
- Parking
- Transit Stop
- Enhanced Crosswalk

July 22, 1999

EDAW, Inc.

Jose Martinez & Associates
Winterwood Associates
TBO Partners



990109-20



City of Austin

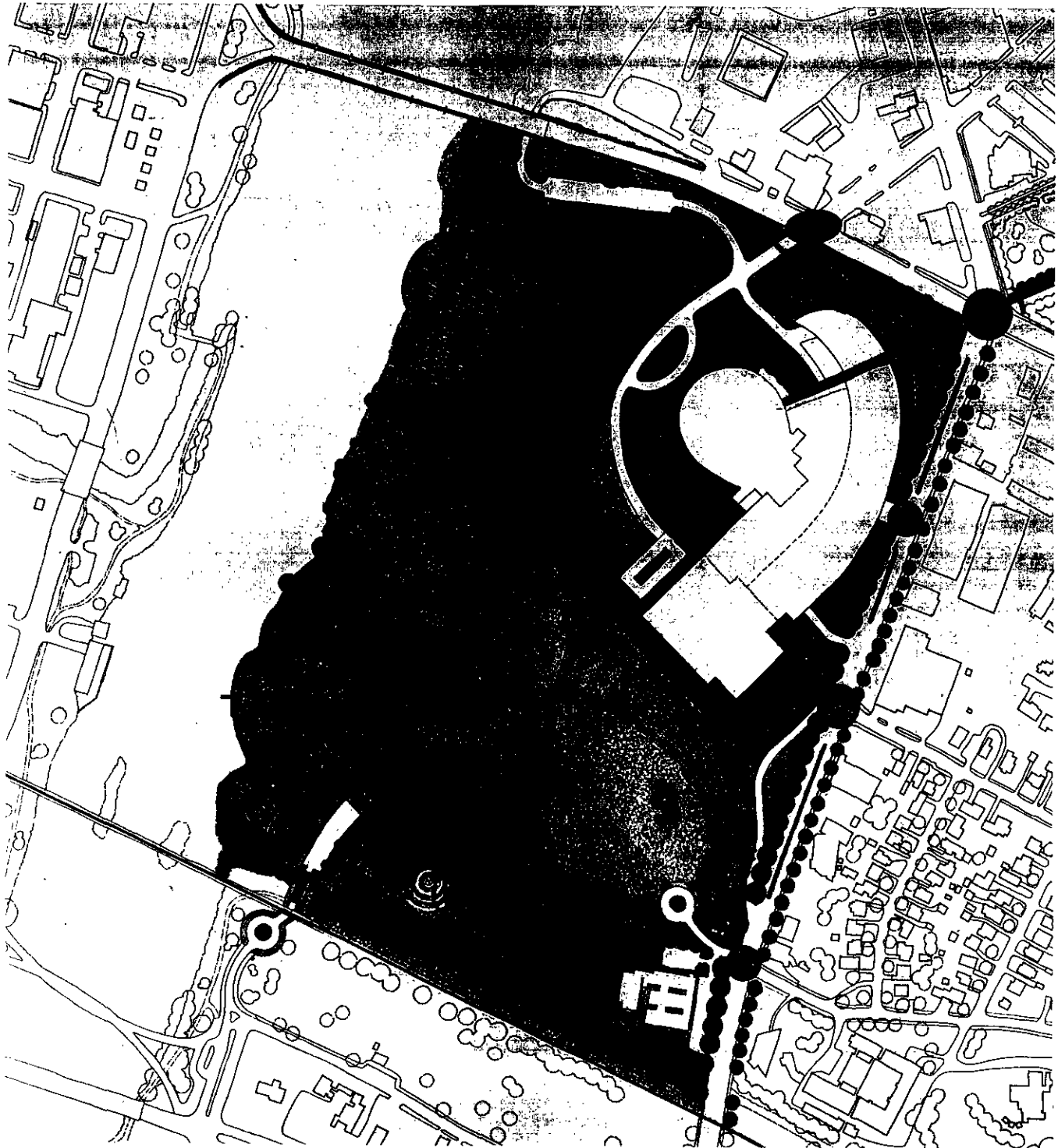
Town Lake Park Master Plan

Master Plan Concept

Final Plan
July 22, 1999

EDAW, Inc.

Jose Martinez & Associates
Winterrowd Associates
TIG Partners



940709 00



City of Austin

Town Lake Park Master Plan

Aerial Perspective



July 22, 1999

EDAW, Inc.

11000 North Loop West, Suite 1000

Dallas, Texas 75243

John Manning & Associates

11000 North Loop West, Suite 1000

Dallas, Texas 75243

Wentwood Associates

11000 North Loop West, Suite 1000

Dallas, Texas 75243

TG Partners





City of Austin

Town Lake Park Master Plan

Hardscape Character

Legend

July 22, 1999

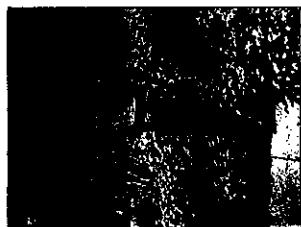
Prepared by
EDAW, Inc.
ALEXANDRIA, VA and DENVER, CO
in association with
Jose Martinez & Associates
Winterwood Associates
TBB Partners



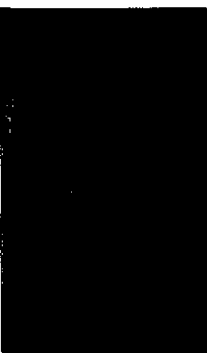
Staining/Amphitheater



Boardwalk



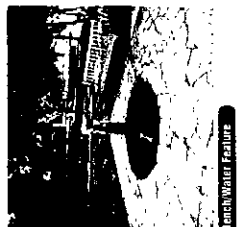
Public Art



Public Art Painting Pattern



Park Structure



Bench/Water Feature



Gate



Stepping Stone Path



Park Structure



Ember Art



Concession Kiosk



Park Structure



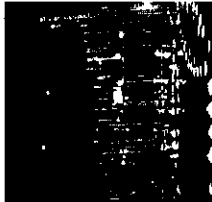
Park Walkways/Walls



Park Structure/Kiosk



Park Structure



Interactive Fountain



Park Wall/Paving



Park Walls



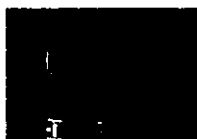
Public Art Fountain



Public Art



Bike Rack



Trash Receptacle



Light



Bench



Bench